



GISWASTE Project. The importance of INSPIRE in a real use of waste management

1

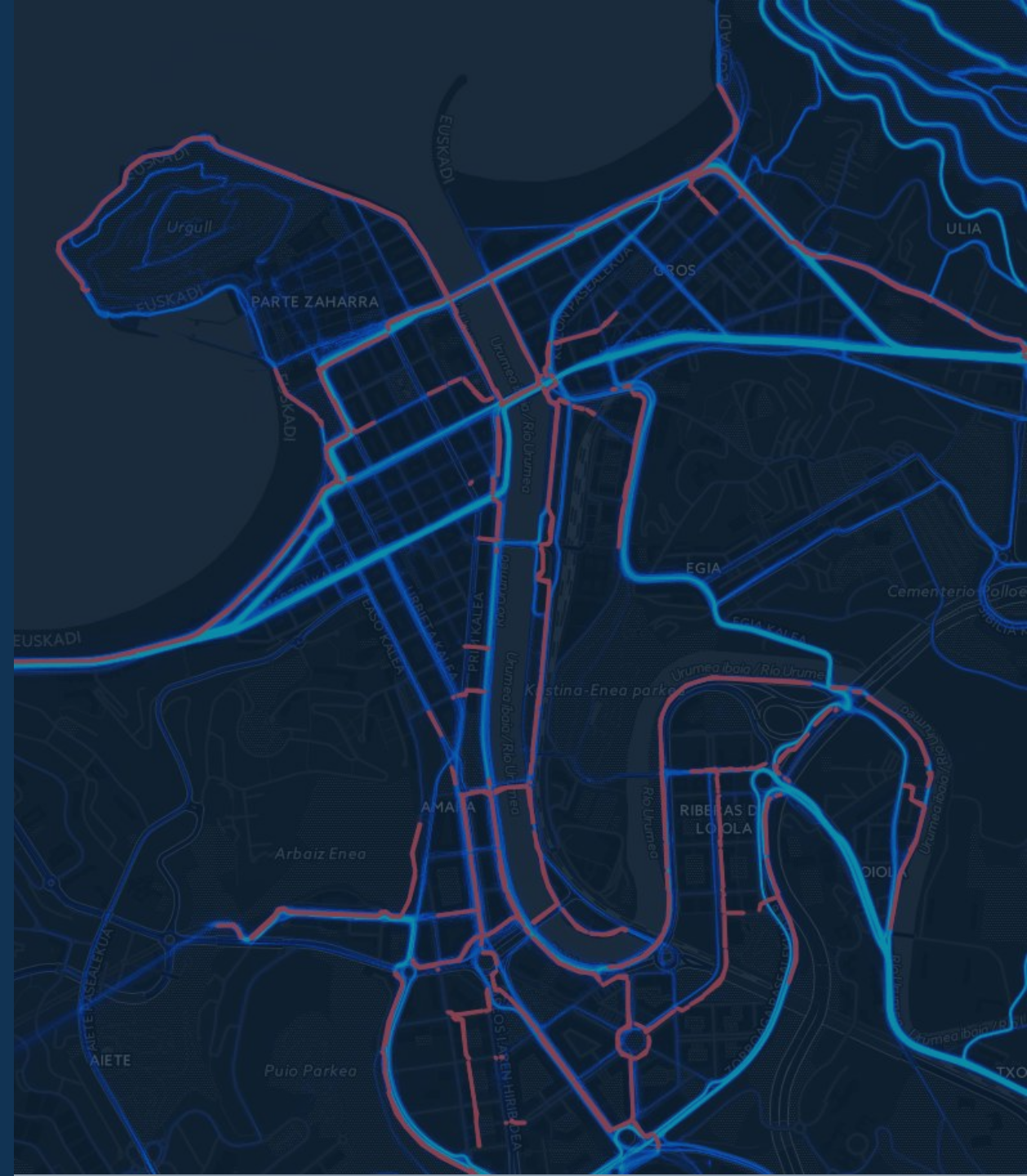




Agenda

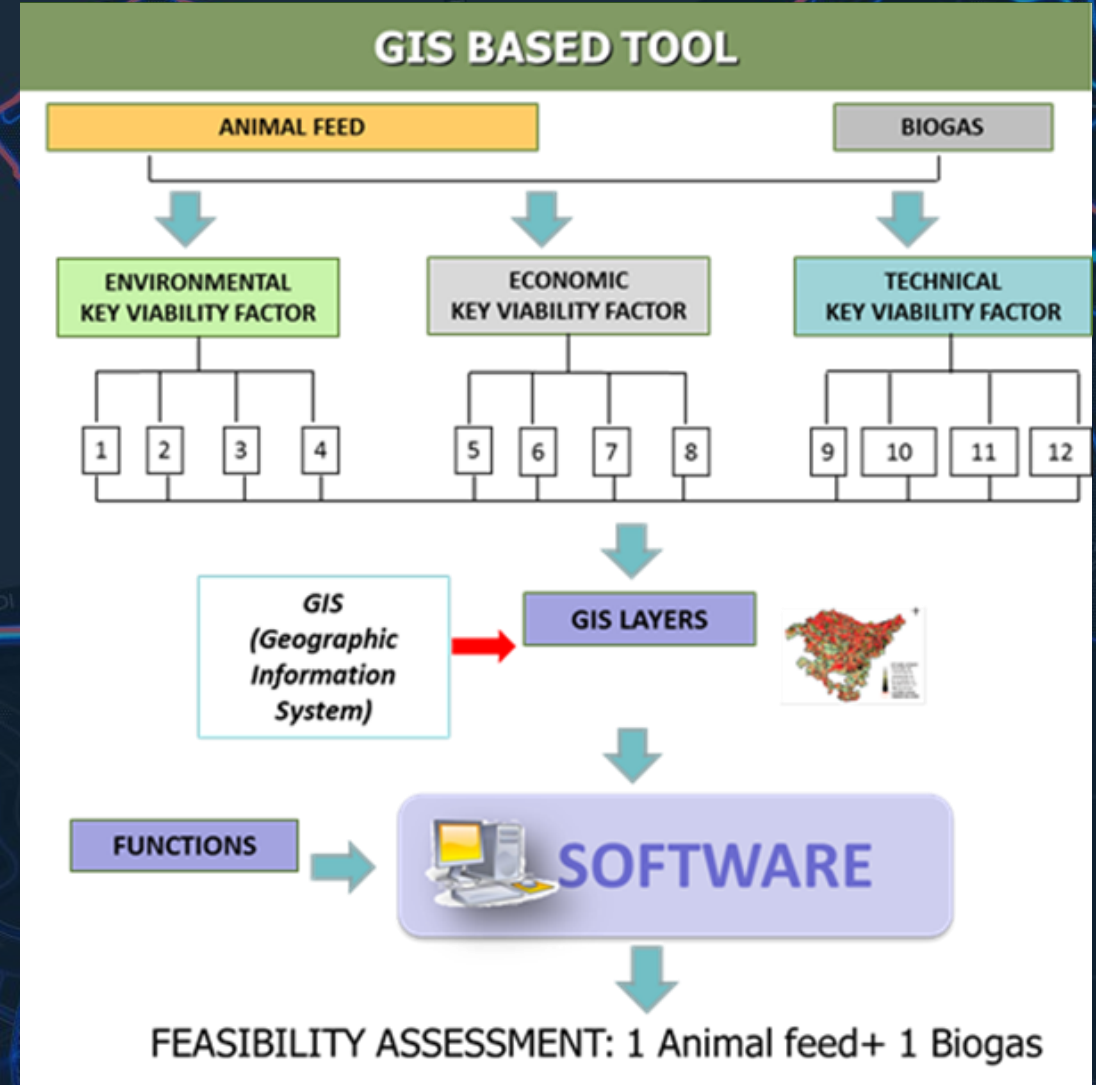
- GISWASTE project
- GIS analysis
- GI need
- Conclusions

- GIS based methodology simulating the technical, economic and environmental feasibility to prioritize food by-products waste alternatives for the Basque Country.
- Budget: 1.419.832 € with 48,77% financing
- Duration: July 2013 → June 2017
- Objectives: Development of a GIS environment for...
 - ✓ Decision making Support for waste management
 - ✓ Minimize the inherent risk of implementing a new valorisation plant

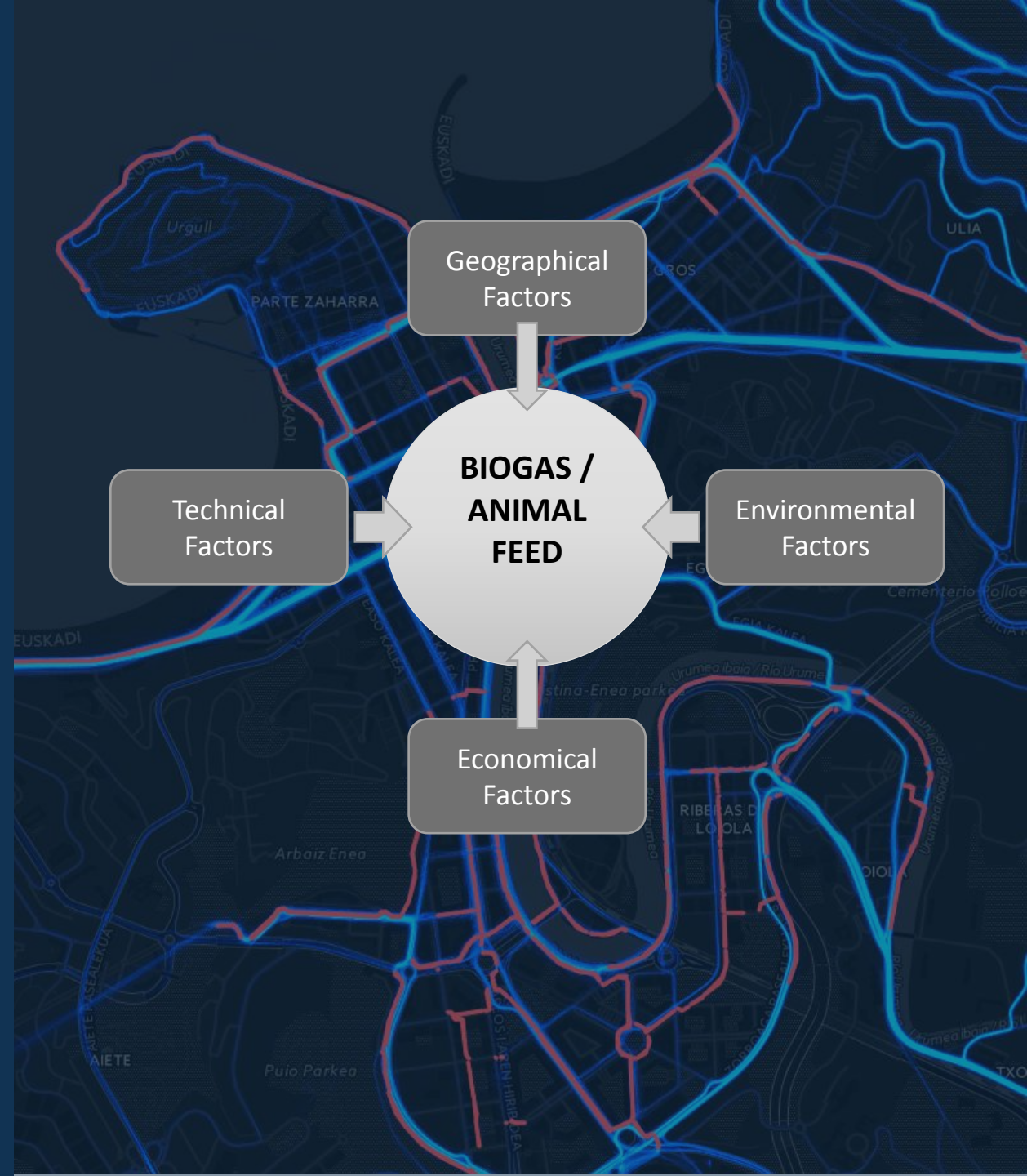


Case-study:

- Geographical area: Basque Country, with the possibility to export it to other EU regions.
- Organic waste: vegetable, meat and dairy by-product from industrial plants and retail
- Valorisation alternatives: production of biogas and animal feed.
- Viability study: 70% of 4M t.



Definition of all the factors that impact the feasibility of the different valorization options



Geographic analysis

Registration and storage of Generation Points

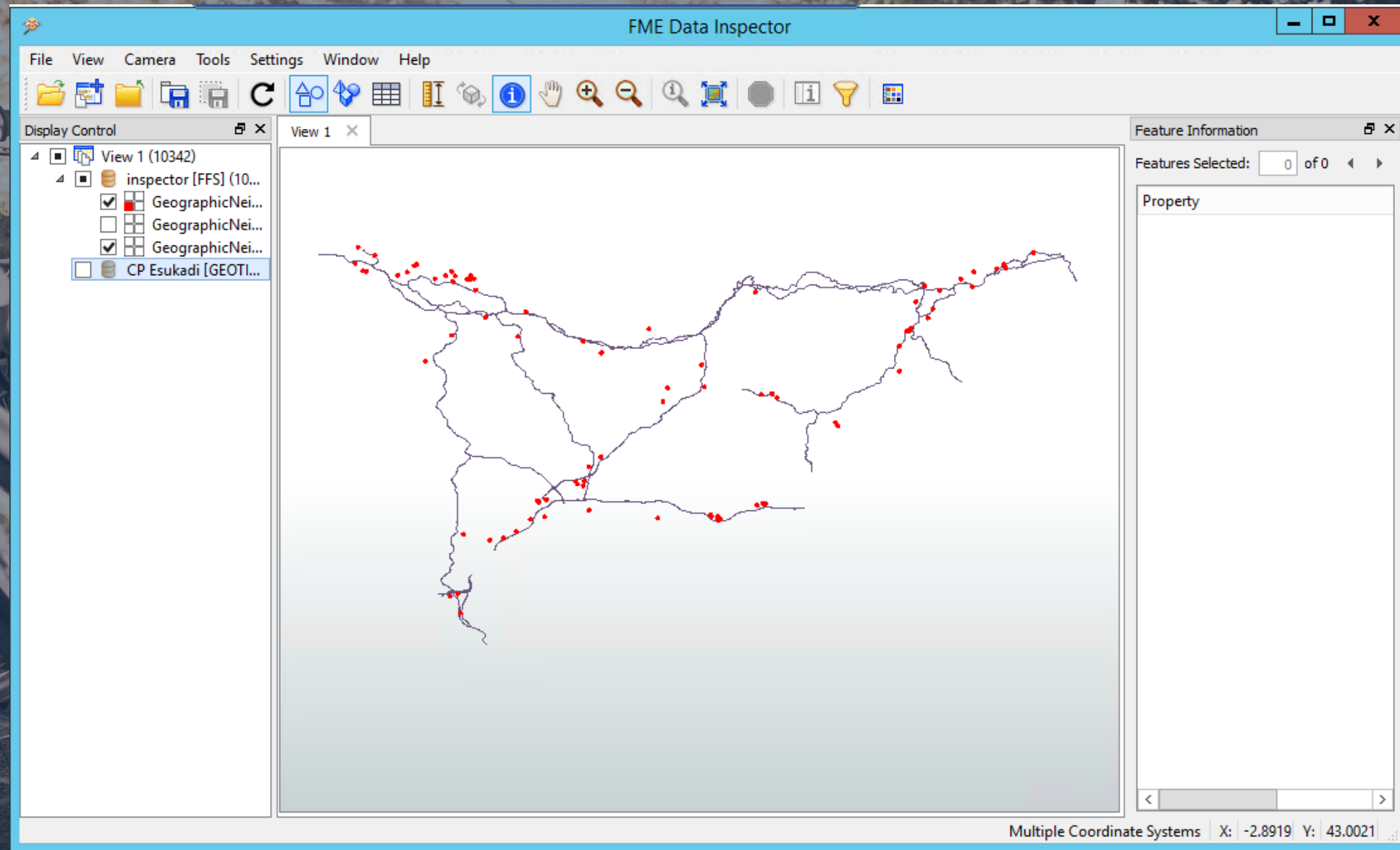
Export the scenario to be assessed

Initial filtering of possible locations for the plant

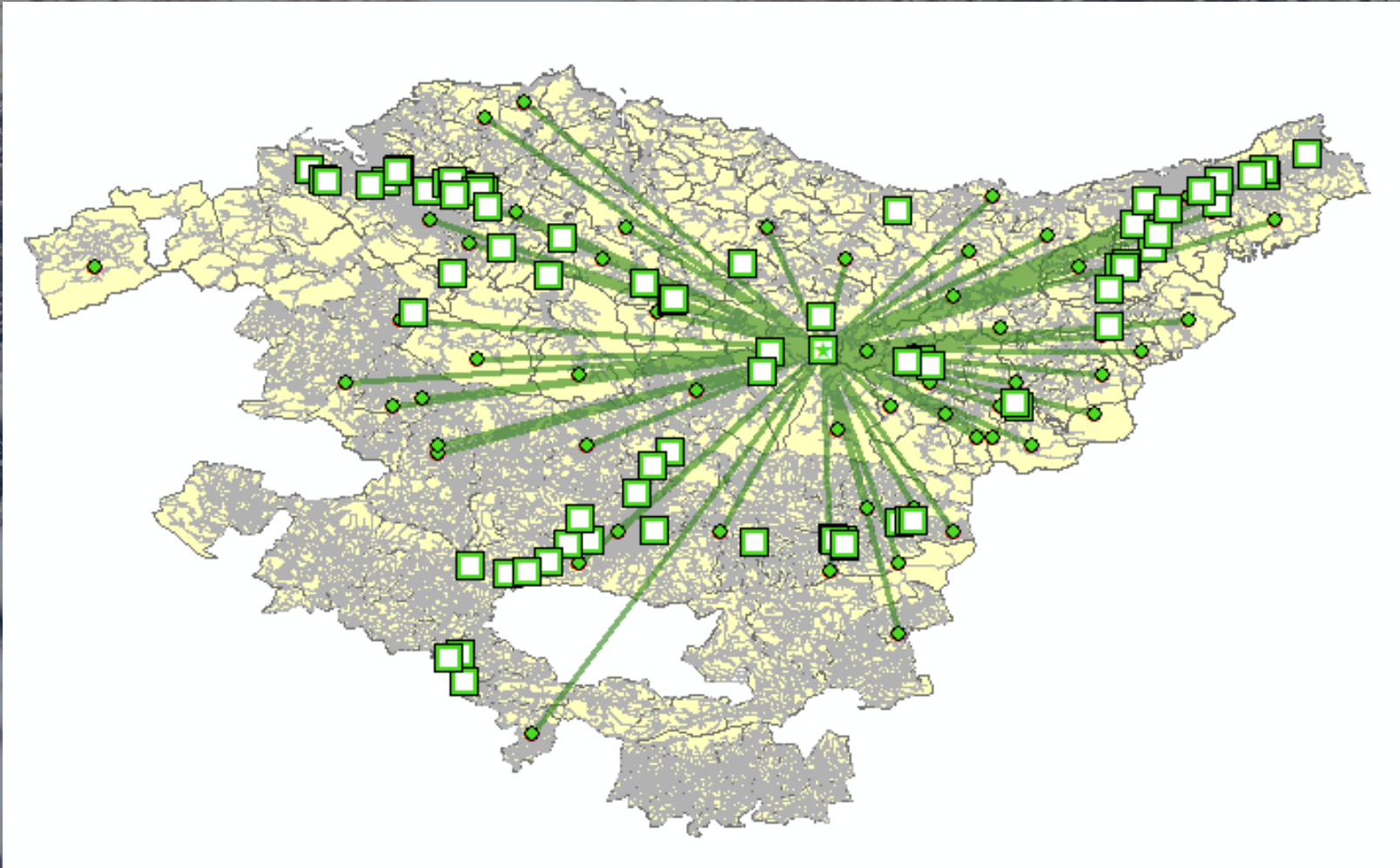
Get the optimal location of the plant

Calculation of logistic routes to collect the waste from the Generation Points

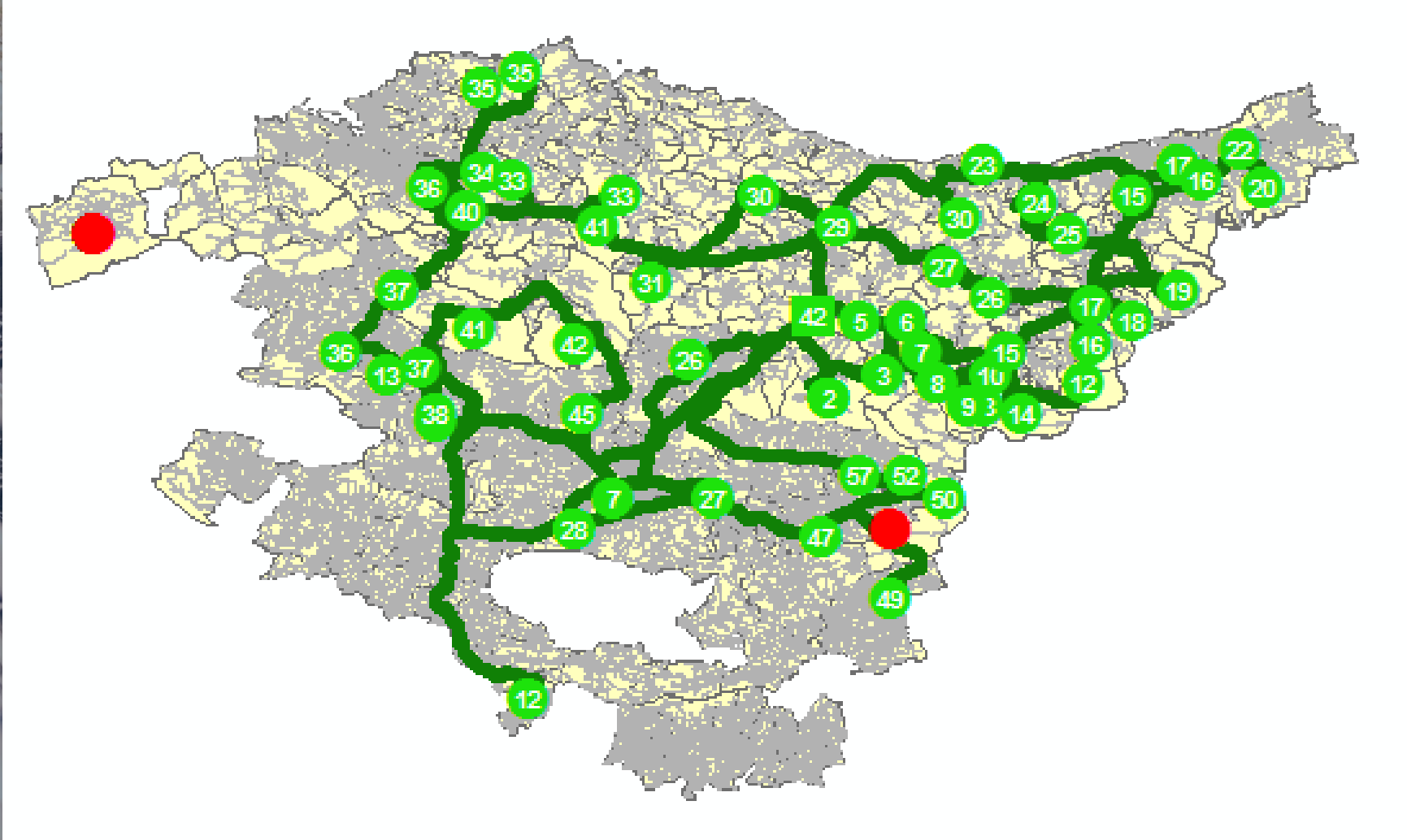
Available soil








Optimal location

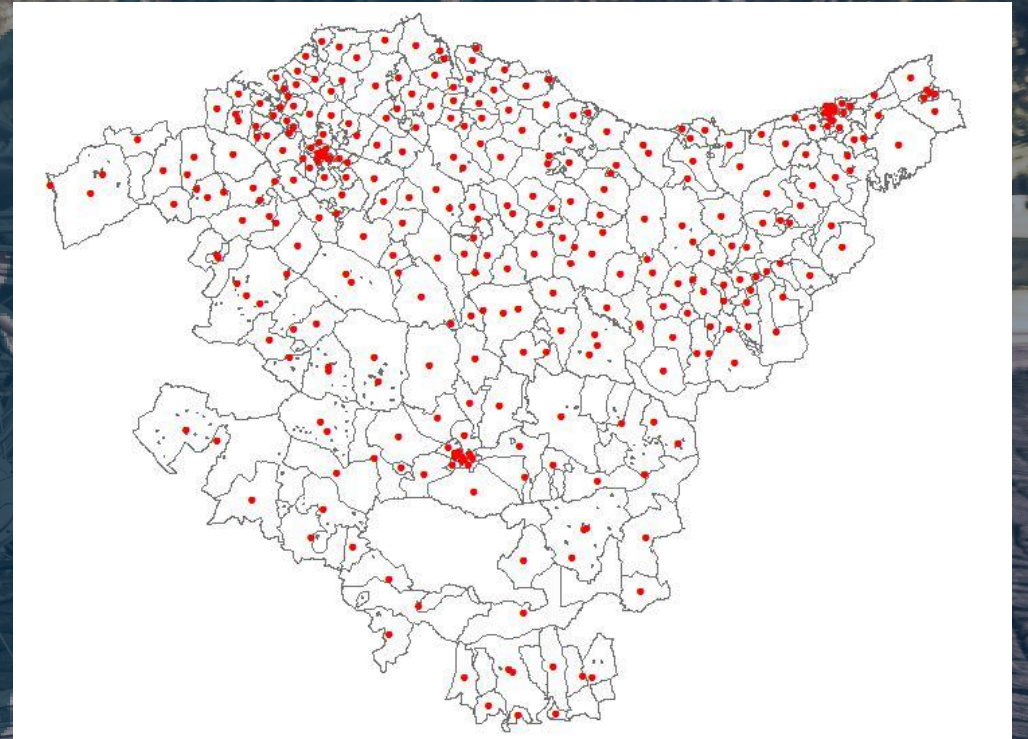


Logistic analysis



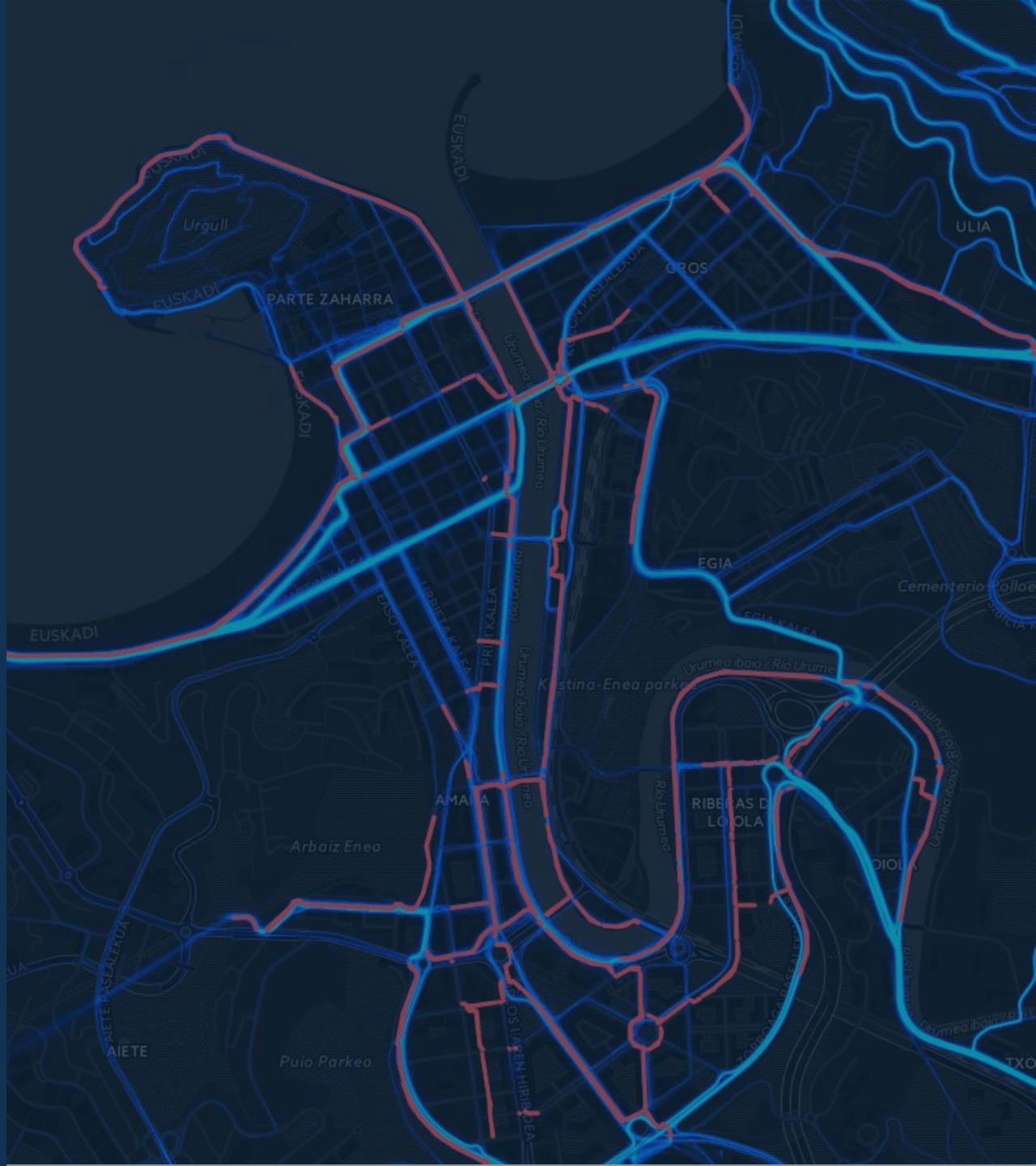
Geographic Information needed

1. Cities, numbers, streets 
2. Postal codes 
3. Roads 
4. Industrial areas 
5. Protected sites 



Conclusions

- ❖ GI is mandatory for a real viability study
- ❖ GI is not accessible yet, it is a barrier for the application, and to re-use the application in different European areas and scenarios
- ❖ Basic datasets for geocoding and road network will cover a high percentage of uses
- ❖ Large effort spent looking for datasets
- ❖ Next phase of INSPIRE will boost these kinds of studies





Thanks!

Alejandro Guinea de Salas
Alejandro.guinea@Geograma.com
www.geograma.com

