

INSPIRE Thematic Cluster on *Elevation, Orthoimagery, Reference systems and Geographical grids*

Jordi Escriu - Facilitator



The screenshot shows the INSPIRE Thematic Clusters website interface. At the top, there is a blue header with the INSPIRE logo and the text "INSPIRE Thematic Clusters". Below the header, there are navigation links for "News", "Events", "Categories", "Clusters", and "More". A search bar is located on the right side of the header. The main content area is divided into several sections: "About the INSPIRE Thematic Clusters Platform" with a grid of images, "Tag cloud", "INSPIRE on Twitter" with a tweet from @GEO_NEXT, "INSPIRE Website", "INSPIRE Forum", "INSPIRE GeoPortal", "INSPIRE Conference 2015", and "News".

www.jrc.ec.europa.eu

*Serving society
Stimulating innovation
Supporting legislation*

Introduction to Thematic cluster scope

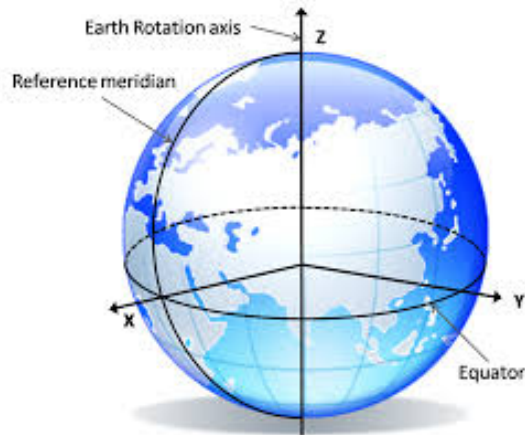
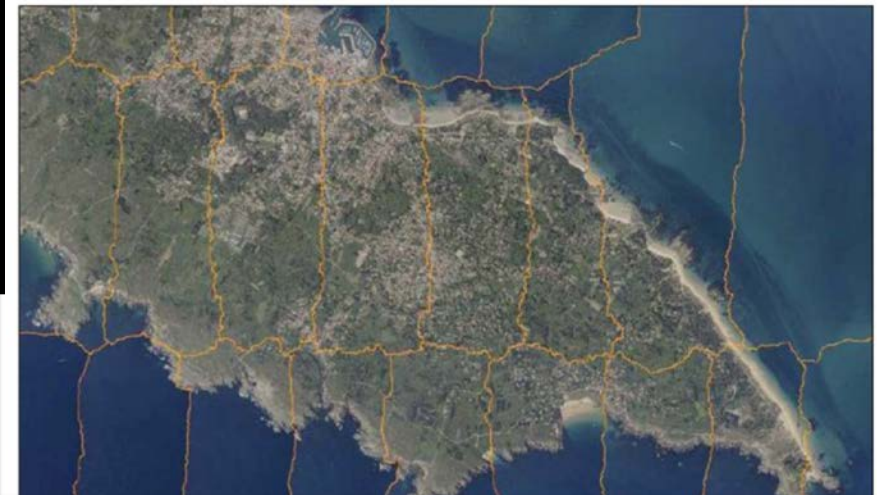
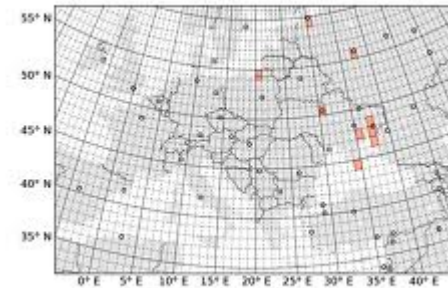
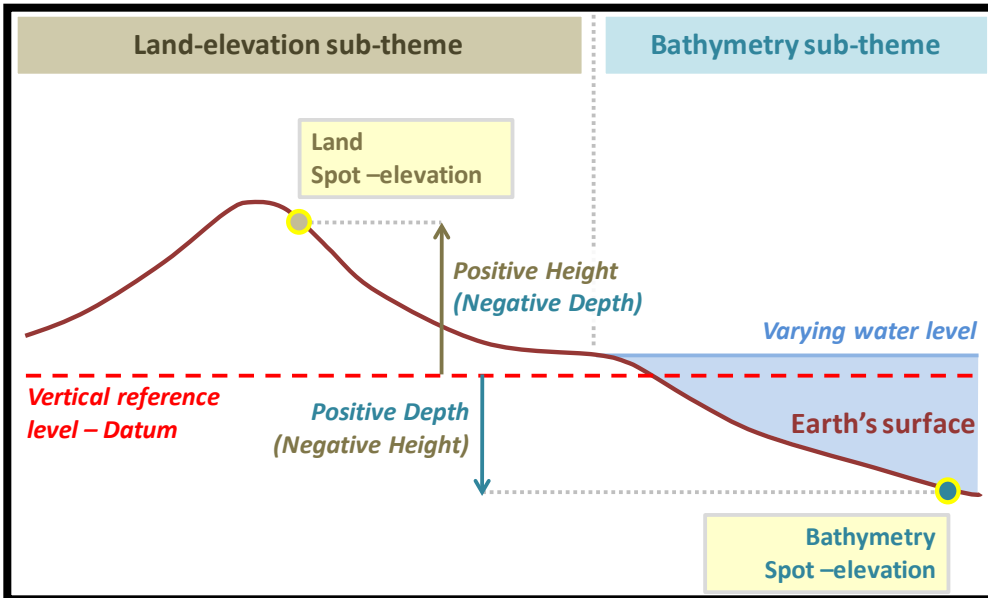
Elevation, Orthoimagery, Reference systems and Geographical grids (61)

Main stakeholders: Mapping agencies, EU agencies,
EU and global coordination bodies



	Elevation	(12)
	Orthoimagery	(13)
	Coordinate reference systems	(11)
	Geographical grid systems	(9)

Introduction to Thematic cluster scope



Thematic cluster/sub-group best practices

Best practices & Pan-European products

- [EuroDEM](#)

- [EU-DEM](#)

- [PNOT](#) (Spain):

[PNOA](#) (Ortho/DTM) / [PNT](#) (Remote sensing) / [SIOSE](#) (LC)

- [EuroGeographics INSPIRE KEN](#)



[PNOA](#) [PNT](#)

Projects

- [ELF](#)

- [CRS-EU](#)

- [ISO CRS Registry](#)



[CRSEU](#)

Coordinate Reference Systems
in Europe



Thematic cluster main group discussions

Categories

- Elevation, Orthoimagery, Reference Systems and Geographical Grids Cluster Categories
 - Thematic use case 0
 - Data model/scope 0
 - Common terminology 1
 - Encoding 5
 - Data quality 3
 - Evolution - Thematic extensions 0
 - Portrayal 0
 - EU Thematic databases 4
 - S/W tools 5
 - Member State issues 8
 - Platform utilisation 0
 - Political/organisational framework 3
 - Codelists 0
 - Best Practice 3
 - Interoperability 4
 - Data provision 3
 - Data used for e-reporting 1

Common topics (Elevation, Orthoimagery)

Encoding / Delivery

- Issues encoding INSPIRE EL and OI coverages (GML COV) – Cross-cluster issue
- Encoding domain extent attribute using gml:boundedBy - GML best practice
- WCS as an INSPIRE download service option

S/W tools

- Use of different transformation tools (e.g. FME)

Validation and testing

- Existing validation rules (OGC validator, eENVplus)

Thematic cluster sub-group discussions

Categories

- Elevation, Orthoimagery, Reference Systems and Geographical Grids Cluster Categories
 - Thematic use case 0
 - Data model/scope 0
 - Common terminology 1
 - Encoding 5
 - Data quality 3
 - Evolution - Thematic extensions 0
 - Portrayal 0
 - EU Thematic databases 4
 - S/W tools 5
 - Member State issues 8
 - Platform utilisation 0
 - Political/organisational framework 3
 - Codelists 0
 - Best Practice 3
 - Interoperability 4
 - Data provision 3
 - Data used for e-reporting 1

Elevation

Thematic use cases / Interoperability

- Pan-European products (EuroDEM, EU-DEM)
 - Need for updating, Resolution needed
- Usefulness of Vector and TIN data

Encoding

- Use of the OGC SWE Quantity constraint

Orthoimagery

Interoperability

- Misalignments between orthoimages produced by different data providers

Thematic cluster sub-group discussions

Categories

- Elevation, Orthoimagery, Reference Systems and Geographical Grids Cluster Categories
 - Thematic use case 0
 - Data model/scope 0
 - Common terminology 1
 - Encoding 5
 - Data quality 3
 - Evolution - Thematic extensions 0
 - Portrayal 0
 - EU Thematic databases 4
 - S/W tools 5
 - Member State issues 8
 - Platform utilisation 0
 - Political/organisational framework 3
 - Codelists 0
 - Best Practice 3
 - Interoperability 4
 - Data provision 3
 - Data used for e-reporting 1

Coordinate reference systems

Interoperability

- Order of coordinate axes in the Transverse Mercator projection (ETRS89-TMzn)
- Obligation to use ETRS89-TM26N to 39N instead of national Mercator projections (projection parameters shall be the same).
- Consistent transformation of coordinates of state boundaries between Member States.
- Need for an official CRS and geodetic parameters registry in Europe

Thematic cluster sub-group discussions

Categories

- Elevation, Orthoimagery, Reference Systems and Geographical Grids Cluster Categories
 - Thematic use case 0
 - Data model/scope 0
 - Common terminology 1
 - Encoding 5
 - Data quality 3
 - Evolution - Thematic extensions 0
 - Portrayal 0
 - EU Thematic databases 4
 - S/W tools 5
 - Member State issues 8
 - Platform utilisation 0
 - Political/organisational framework 3
 - Codelists 0
 - Best Practice 3
 - Interoperability 4
 - Data provision 3
 - Data used for e-reporting 1

Geographical grids

Thematic use cases / Interoperability

- Use of the 'Equal Area Grid' (Grid_ETRS89-LAEA)
- Usability of the 'Zoned Geographic Grid' (Grid_ETRS89-GRS80)
- New discussions about redefining the 'Zoned Geographic Grid' (New trends: WMTS, etc.)

Proposals for MIG MIWP 14

Encoding (INSPIRE coverages)

- Provide support to Member States to perform the transformation to INSPIRE GML COV (S/W tools).
→ Experiences in Spain, Sweden and Germany (FME)
- Recommend in the TG the use of `gml:boundedBy` to encode Domain extent (in addition to 'extent' att.).

Elevation

- Correct in the TG the use of the OGC SWE Quantity constraint.
- Ask OGC to clarify the use of this constraint in SWE.

Proposals for MIG MIWP 14

CRS / Grids

- Need for an official European CRS.
 - ISO CRS Registry?
- Purpose / use of INSPIRE Grids is not clear.
 - Improve explanations in TGs, or
 - Additional documents.
- 'Zoned Geographic Grid'.
 - Changes?
 - Is it implementable?

Thematic cluster promotion

- **EuroGeographics INSPIRE KEN**



EuroGeographics

- **06.03.2015 – Webinar**

Introduction to the INSPIRE Thematic Clusters
for Topographic and Cadastral Reference Data

TC#3 (EL-OI-RS-GG) and **TC#6** (HY-GN-AU-CP-AD-BU-TN)

- **16-17.04.2015, Prague – Workshop TC#6**

Transformation workshop themes AD-AU-CP-BU-GN

- **09/10.2015, Barcelona – Workshop TC#3**

Transformation workshop themes EL-OI (raster data)

Thematic cluster promotion

- **INSPIRE Conference Workshop** (Thursday 28.05.2015)

“Supporting INSPIRE implementation: the Thematic Clusters for topographic and cadastral reference data”

- **Audience**

- Any producer of INSPIRE themes
- Any existing or potential user

- **Discussion of implementation issues**

- Flattening of data models
- How to make extensions of INSPIRE
- Encoding of coverages
- WCS as an INSPIRE download service



Thematic cluster promotion

National implementing working groups

- Empower their participation through NCPs

Engage communities not yet represented

- Hydrographic / River basin offices (Bathymetry)
- ESA (satellite imagery)
- ISO CRS Registry working group
- Developers of transformation and validation software
- European agencies and institutions (use cases & needs)

Linkage with existing initiatives / projects

- ISA & Copernicus (Earth Observation programmes)
- ARE3NA (applicable software)



Questions?

Jordi Escriu

jordi.escriu@icgc.cat



JOIN THEMATIC CLUSTER #3

